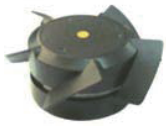
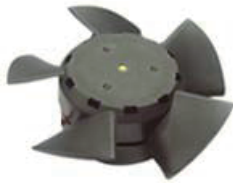


DC Skeleton Fan



SDK6025



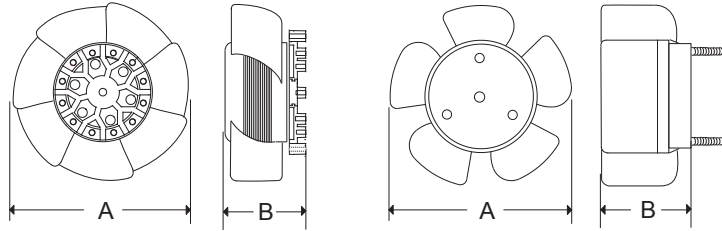
SDK1225



SDK180



SDK254



Sinwan Model Series	Impeller Size (AxBxC) mm	Airflow Range CFM	Airflow Range m3/min	Maix. Static Inch/H2O	Air Pressure mm/H2O
SDK6025 -Plastic Impeller	Dia.56x25	38~12	1.1~0.34	0.22~0.09	5.6~2.3
SDK8025 -Plastic Impeller	Dia.72x25	48~22	1.36~0.62	0.23~0.10	5.8~2.5
SDK9225 -Plastic Impeller	Dia.82x25	57~25	1.6~0.71	0.24~0.15	6.1~3.8
SDK938 -Plastic Impeller	Dia.82x36	80~60	2.27~1.70	0.45~0.22	11.4~5.6
SDK125 -Plastic Impeller	Dia108x30.5	86~45	2.44~1.27	0.24~0.13	6.1~3.3
SDK1238 -Plastic Impeller	Dia.108x36	100~65	2.83~1.84	0.28~0.15	7.1~3.8
SDK180 -Plastic Impeller	Dia.163x66	405~240	11.5~6.80	0.71~0.22	18.8~5.6
SDK254 -Plastic Impeller	Dia.215x68	830~340	23.5~9.63	0.78~0.23	19.8~5.8

General specifications

- Motor: Microprocessor cpu control or standard brushless DC, auto cutoff/restart, locking & polarity protected
Optional Functions: RD Alarm, FG Tachometer, Speed control NTC thermistor, PWM or control voltage speed setting
- Motor Case: Aluminum die cast, natural color treatment or black color cosmetics
- Impeller: Glass fiber reinforced PBT thermoplastic, UL94V-0 impeller
- Bearing System: Two high precision permanently lubricated ball bearings
- Operating Temp: Ambient non-condensing acceptable range 30°C~+70°C
- L10 Life: MTBF Formula L10 indoor life test 120K hours at 35°C, 40K hours at 60°C
- Dielectric Strength: 500VAC/sec., Max leakage 0.5mA

Model Nomenclature

SDK 1238 AP - 48 H B (RFP)

Series Name

SDK-Plastic Impeller
MDK-Metal Impeller

Frame Size(mm)

6025: Dia.56x25
8025: Dia.72x25
9225: Dia.82x25
938 : Dia.82x36
1225: Dia.108x30.5
1238: Dia.108x36
180 : Dia.163x66
254 : Dia.215x68

Frame

AP-Aluminum die casting
Black color
AN-Aluminum die casting
Natural Treatment

Voltage(VDC)

05-5V
12-12V
24-24V
48-48V

Motor Bearing

B-Two Ball Bearings

Speed

H-High Speed
M-Medium Speed
L-Low Speed
H(HH)-Extra High Speed
L(LL)-Extra Low Speed

Motor Optional function features

R-R/D Alarm
F-F/G Tachometer
Speed Controls
C-S/C Thermister NTC
P-PWM, Pulse Width Modulation
V-S/V Control Voltage Speed setting